

An abstract graphic composed of several overlapping, curved, wood-grain-like shapes in a light brown color, set against a dark grey background. These shapes sweep across the upper and left portions of the page.

# Engineered

WOOD FLOORING

COLLECTION  
2023 - 24

**SPAN**<sup>™</sup>  
FLOORS





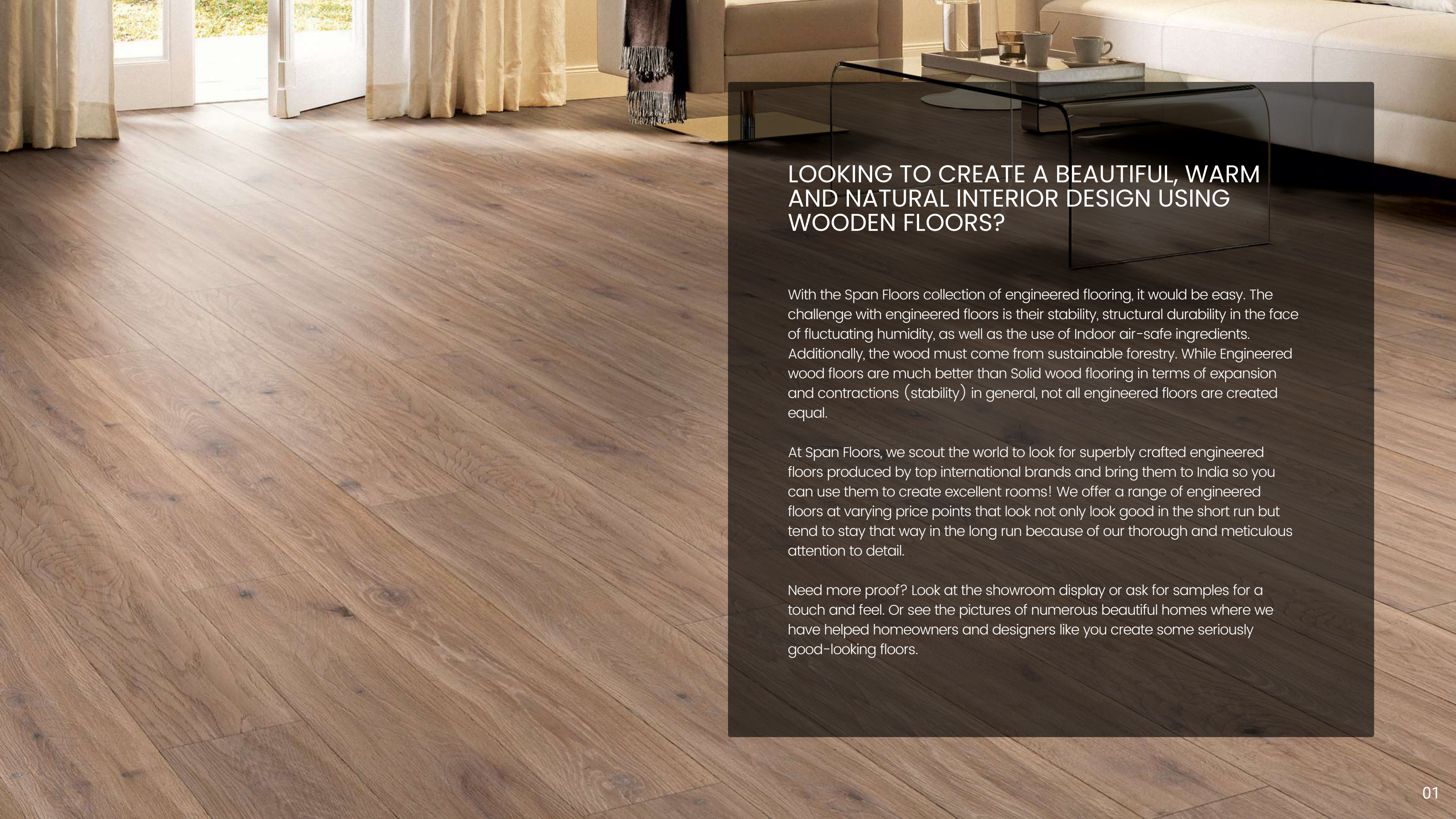
# ENGINEERED

## COLLECTION

### *INDEX*

- 04 AIRY LIGHT TONES
- 21 WHITE, GREY & BLACK TONES
- 40 MEDIUM NATURAL TONES
- 59 EARTHY BROWN TONES
- 77 THE SPAN FLOORS STORY
- 79 ACCESSORIES
- 80 KNOW YOUR SPAN FLOOR!
- 81 FLOOR CLEANING AND MAINTENANCE
- 82 INSTALLATION





## LOOKING TO CREATE A BEAUTIFUL, WARM AND NATURAL INTERIOR DESIGN USING WOODEN FLOORS?

With the Span Floors collection of engineered flooring, it would be easy. The challenge with engineered floors is their stability, structural durability in the face of fluctuating humidity, as well as the use of Indoor air-safe ingredients. Additionally, the wood must come from sustainable forestry. While Engineered wood floors are much better than Solid wood flooring in terms of expansion and contractions (stability) in general, not all engineered floors are created equal.

At Span Floors, we scout the world to look for superbly crafted engineered floors produced by top international brands and bring them to India so you can use them to create excellent rooms! We offer a range of engineered floors at varying price points that look not only look good in the short run but tend to stay that way in the long run because of our thorough and meticulous attention to detail.

Need more proof? Look at the showroom display or ask for samples for a touch and feel. Or see the pictures of numerous beautiful homes where we have helped homeowners and designers like you create some seriously good-looking floors.



## 4 KEY PROMISES OF SPAN FLOORS

### AESTHETICS

We offer the best of the best in the world, which is why you will find a wide variety of beautiful engineered floors in our collection. From very light to mid-browns to dark to fashionable greys, we are sure you will find something to go with your dream interior design. In addition, we offer a variety of formats, such as planks, herringbone or chic chevrons, to go with the coolest design trends!

### DURABILITY

Durability is of utmost importance to us. We take time to understand the properties of the wood we are selling entirely and try to mitigate any adverse effects caused by the various factors affecting wooden floors. Our engineered flooring consists mainly of a top layer thickness of 3 mm or more. Should the need arise, this robust top layer allows for sanding and refinishing after many years of usage and gets the floor back to a pristine condition. In addition, the locking and installation systems we use are very strong, allowing the flooring planks to stay together and look fantastic in the long run. Now, what about the daily traffic in a typical Indian home? Well, we have taken care of that too. The scratch-resistant coating on top makes the planks very resistant to abrasion caused by dust. And what about moisture? Again, the structure of our engineered floors is quite water-resistant. Flooding will destroy any wood floor but short of that, you are in good hands. Just ask for and follow our product fact guides and maintenance instructions.

### HEALTH

Now this may come as a surprise but there is a connection with health too. The raw materials used while manufacturing engineered flooring contain some amounts of chemicals like other building materials. We take care to source our finished floors only from reliable manufacturers who have the necessary certifications in this regard. This means after installation you do not have to worry about any off gassing from the product which is beyond the permissible limits set by the stringent European and US standards. All products come with necessary 3rd party certifications.

### SUSTAINABILITY

No one wants to beautify their homes at the cost of the general environment. Right? We know that you care for the planet just as much as we do. So we have taken the necessary care to offer you engineered flooring that is made of wood exclusively from certified forestry operations. Once again you can ask for the necessary 3rd party certifications that our manufacturers adhere to.

### CERTIFICATIONS



\* Not all certifications apply to all products. For exact information, please ask.

\*\* Above logos are used with permission from respective manufacturers.



We have been helping luxury homeowners and designers across India and now in Dubai create some awesome interior designs using our high-quality and state-of-the-art Engineered wood floors. If you are a homeowner constructing or renovating the home of your dreams, it would be our privilege to help you too!

“

When the final product came out, it was like the best decision I could have ever made for this house.

Mr. Akshay Verma  
*Verma Jewellers*





# AIRY LIGHT TONES

Lighter wooden flooring can have a significant impact on interior design. It can make a space feel more open and bright and can create a modern and sleek aesthetic. Lighter-coloured wood can also complement various design styles, from Scandinavian to mid-century modern. Additionally, lighter wood floors can highlight other interior design elements, such as furniture or artwork. Lighter wooden flooring can be an excellent choice for creating a fresh and inviting interior space.



AIRY LIGHT TONES  
COLLECTION



OAK CHAMBORD  
1174-3215  
15/3.2MM X 127MM X 635MM  
HERRINGBONE  
COSWICK COLLECTION



OAK PASTEL  
1153-3247  
15/3.2MM X 127MM X 600MM...2100MM  
PLANK  
COSWICK COLLECTION



OAK CHAMBORD  
S-1172-7215  
15/3.2MM X 190MM X 600MM... 2100MM  
PLANK  
COSWICK COLLECTION



OAK CASHMERE  
14/3MM X 120MM X 600MM  
CHEVRON  
CHAMPACA COLLECTION



OAK FAWN  
STCV06  
14/3 MM X 120MM X 600MM  
CHEVRON  
CHAMPACA COLLECTION



OAK CASHMERE  
14/3MM X 190MM X 600MM...1800MM  
PLANK  
CHAMPACA COLLECTION



AIRY LIGHT TONES  
COLLECTION



OAK DIOR  
14/3MM X 190MM X 600MM...1800MM  
PLANK  
CHAMPACA COLLECTION



OAK VERSAILLES DIOR  
14/3MM X 600MM X 600MM  
SQUARE TILE  
CHAMPACA COLLECTION



OAK VANILLA  
1174-1508  
15/3.2MM X 127MM X 635MM  
HERRINGBONE  
COSWICK COLLECTION





## OAK CHAMBORD

1174-3215

15/3.2mm x 127mm x 635mm  
HERRINGBONE





OAK CHAMBORD HB



OAK CHAMBORD HB



OAK CHAMBORD HB





## OAK PASTEL

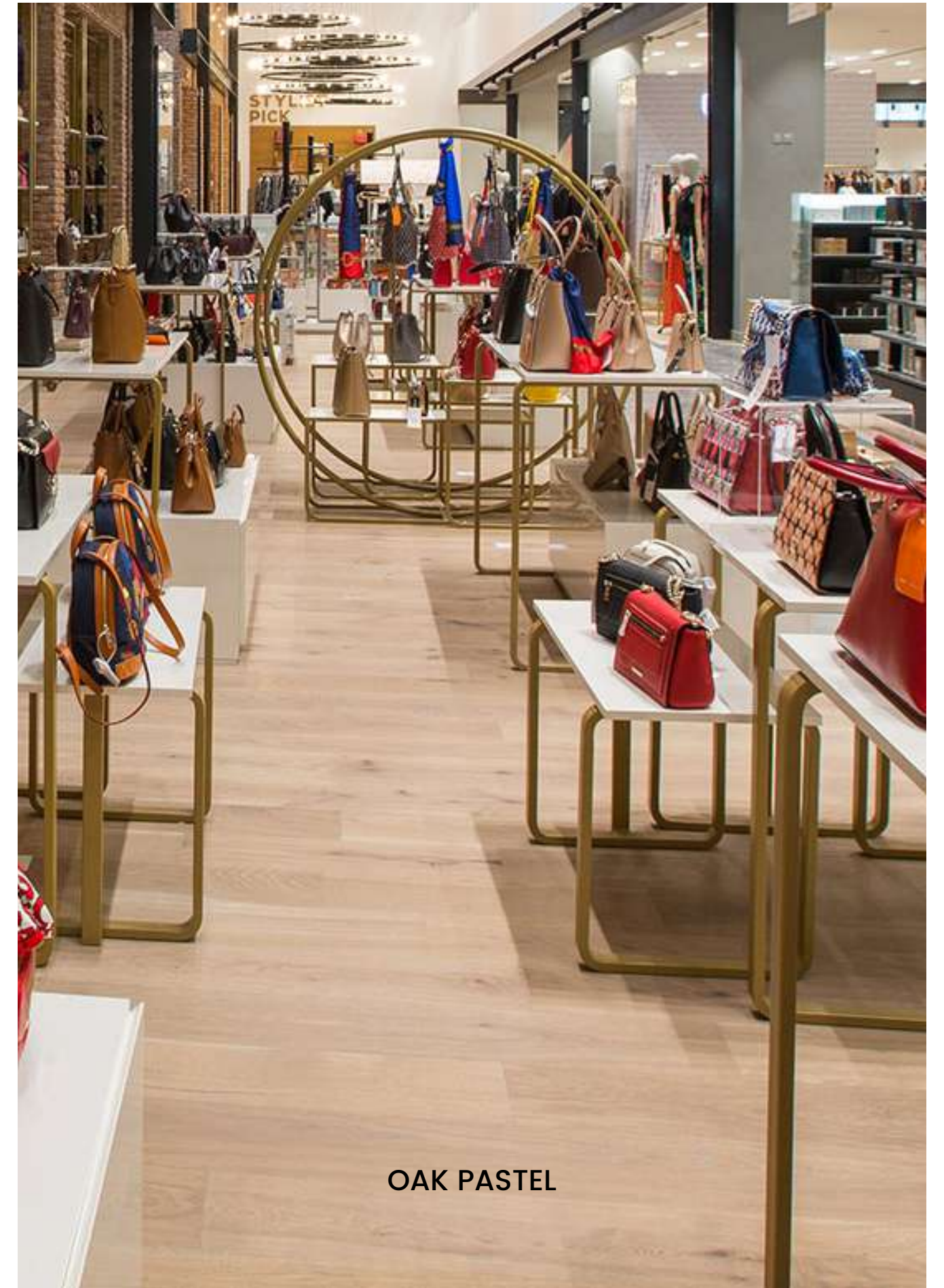
1153-3247

15/3.2mm x 127mm x 600mm...2100mm  
PLANK





OAK PASTEL



OAK PASTEL





OAK PASTEL



OAK PASTEL





## OAK CHAMBORD

S-1172-7215

15/3.2mm x 190mm x 600mm... 2100mm  
PLANK



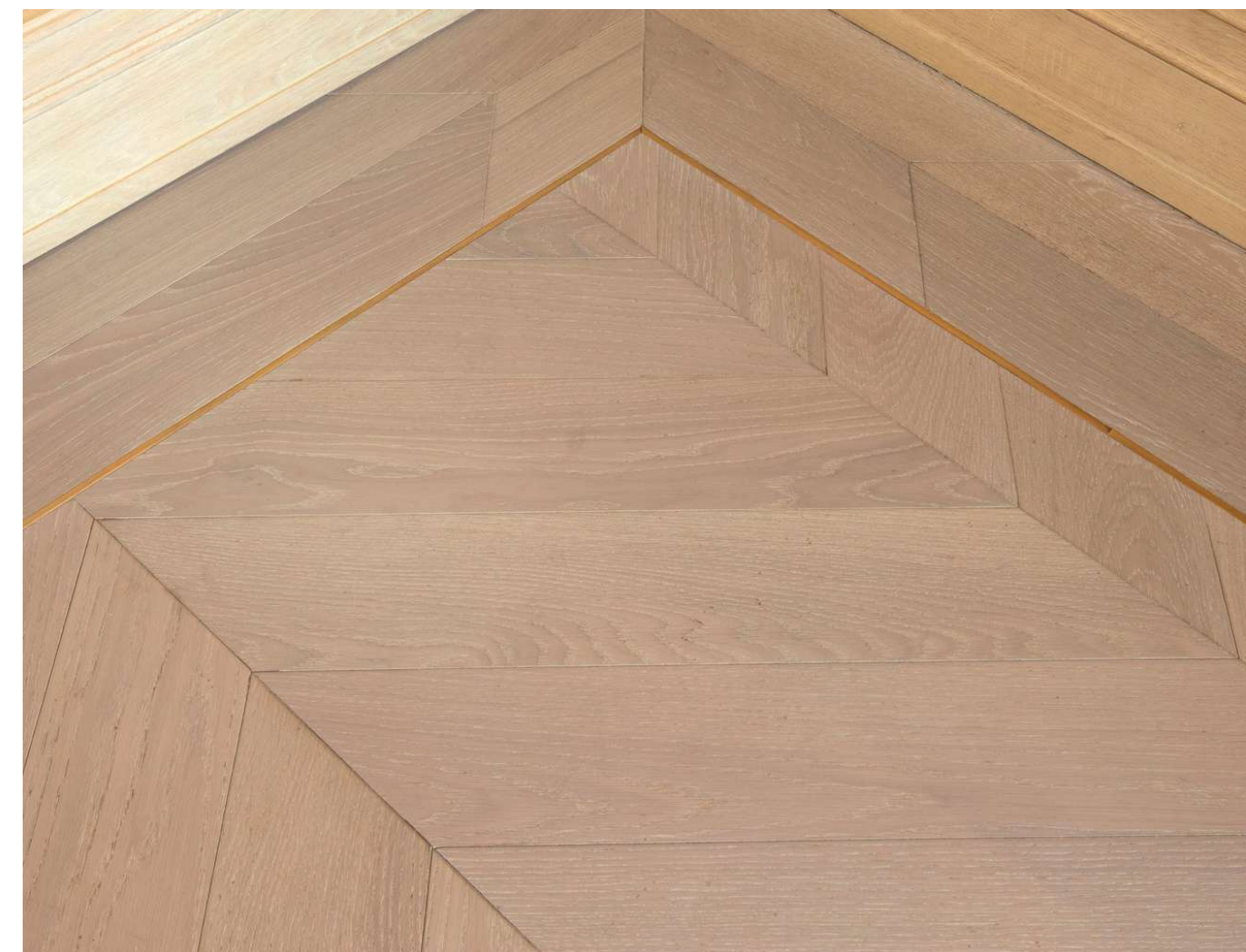


OAK CHAMBORD PLANK



OAK CHAMBORD PLANK





**OAK CASHMERE**  
14/3mm x 120mm x 600mm  
CHEVRON





CASHMERE CHEVRON





## OAK FAWN

STCV06

14/3 mm x 120mm x 600mm  
Chevron





## OAK CASHMERE

14/3mm x 190mm x 600mm...1800mm  
PLANK





## OAK DIOR

14/3mm x 190mm x 600mm...1800mm  
PLANK

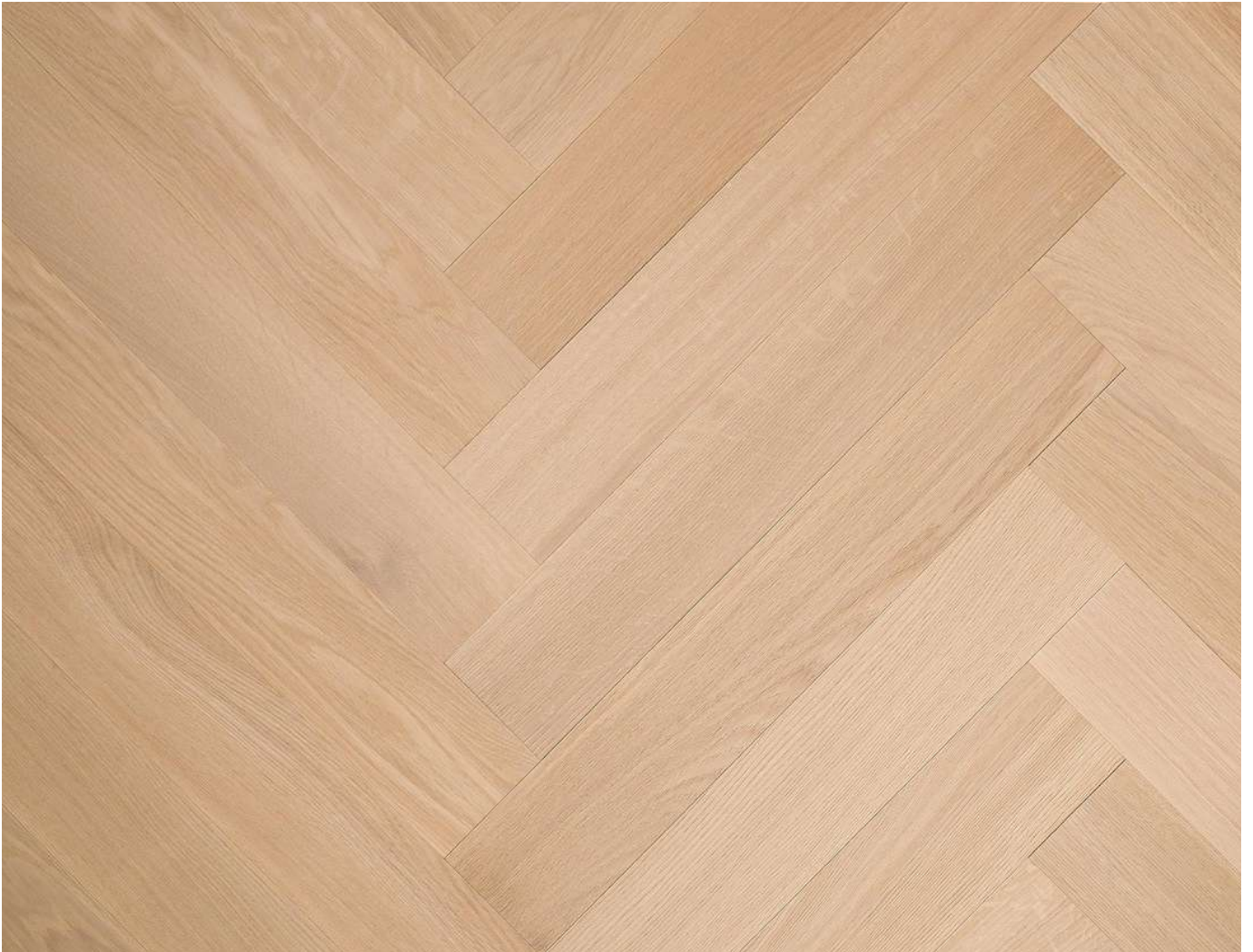




## OAK VERSAILLES DIOR

14/3mm x 600mm x 600mm  
SQUARE TILE





**OAK VANILLA**

1174-1508

15/3.2mm x 127mm x 635mm  
HERRINGBONE



# WHITE, GREY AND BLACK TONES

White, grey, and black tones of wooden flooring can have a significant impact on the overall look and feel of an interior space. White tones give a bright and crisp feel, making a space appear larger and more open. Grey tones create a calming and sophisticated atmosphere, while black tones provide a bold and dramatic statement. The choice of tone depends on the desired style and ambience of the room. It is essential to consider other elements of the space, such as wall colour and furniture, when selecting the tone of wooden flooring to ensure a cohesive and harmonious design.



# WHITE,GREY AND BLACK TONES

COLLECTION



OAK ROCKY REEF  
1174-4230  
15/3.2MM X 127MM X 635MM  
HERRINGBONE  
COSWICK COLLECTION



ASH FRENCH RIVIERA  
1253-3257 | 1231-3257  
1231-3257: 15/4MM X 127MM X 600...2100MM  
1253-3257: 15/3.2MM X 127MM X 600MM...2100MM  
PLANK  
COSWICK COLLECTION



OAK GREY VELVET  
1153-4574  
15/3.2MM X 127MM X 600MM...2100MM  
PLANK  
COSWICK COLLECTION



OAK GREY CASHMARE  
1174-4251  
15/3.2MM X 127MM X 635MM  
HERRINGBONE  
COSWICK COLLECTION



OAK GREY CASHMERE  
S-1172-7251  
15/3.2MM X 190MM X 600MM... 2100MM  
PLANK  
COSWICK COLLECTION



OAK ROCKY REEF  
S-1172-7230  
15/3.2MM X 190MM X 600..2100MM  
PLANK  
COSWICK COLLECTION



WHITE,GREY AND BLACK TONES  
COLLECTION



OAK WINDSOR BROWN GREY  
14/3MM X 600MM X 600MM  
SQUARE TILE  
CHAMPACA COLLECTION



OAK GREY 359  
14/2MM X 190MM X 500MM...1900MM  
PLANK  
LAMETT XL COLLECTION





## OAK ROCKY REEF

1174-4230

15/3.2mm x 127mm x 635mm  
HERRINGBONE





## ASH FRENCH RIVIERA

1253-3257

1231-3257

1231-3257: 15/4mm x 127mm x 600...2100mm

1253-3257: 15/3.2mm x 127mm x 600mm...2100mm

PLANK





ASH FRENCH RIVIERA





## OAK GREY VELVET

1153-4574

15/3.2mm x 127mm x 600mm...2100mm  
PLANK





## OAK GREY CASHMARE

1174-4251

15/3.2mm x 127mm x 635mm  
HERRINGBONE



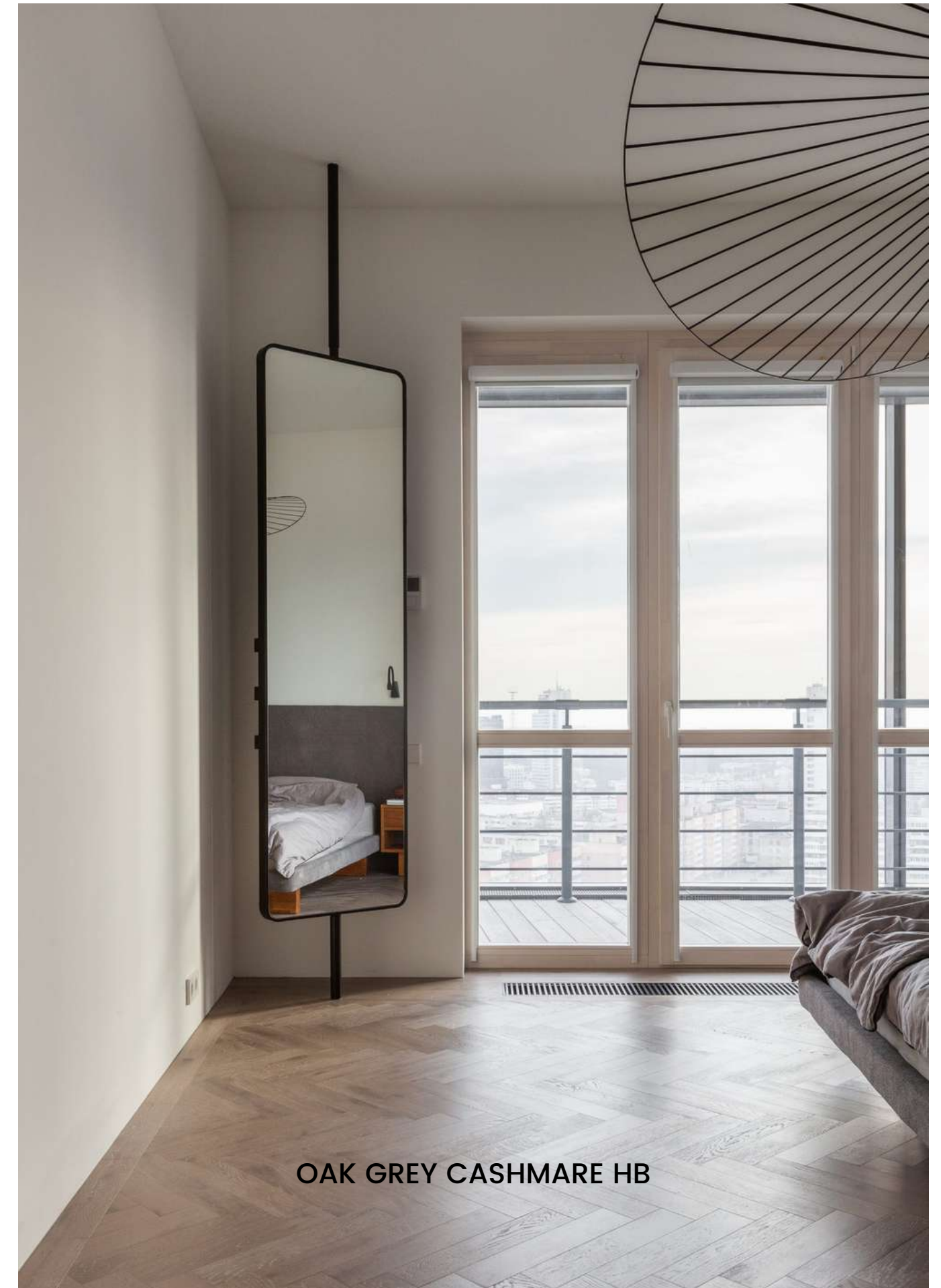
OAK GREY CASHMARE HB



GREY CASHMARE HB



OAK GREY CASHMARE HB







## OAK GREY CASHMERE

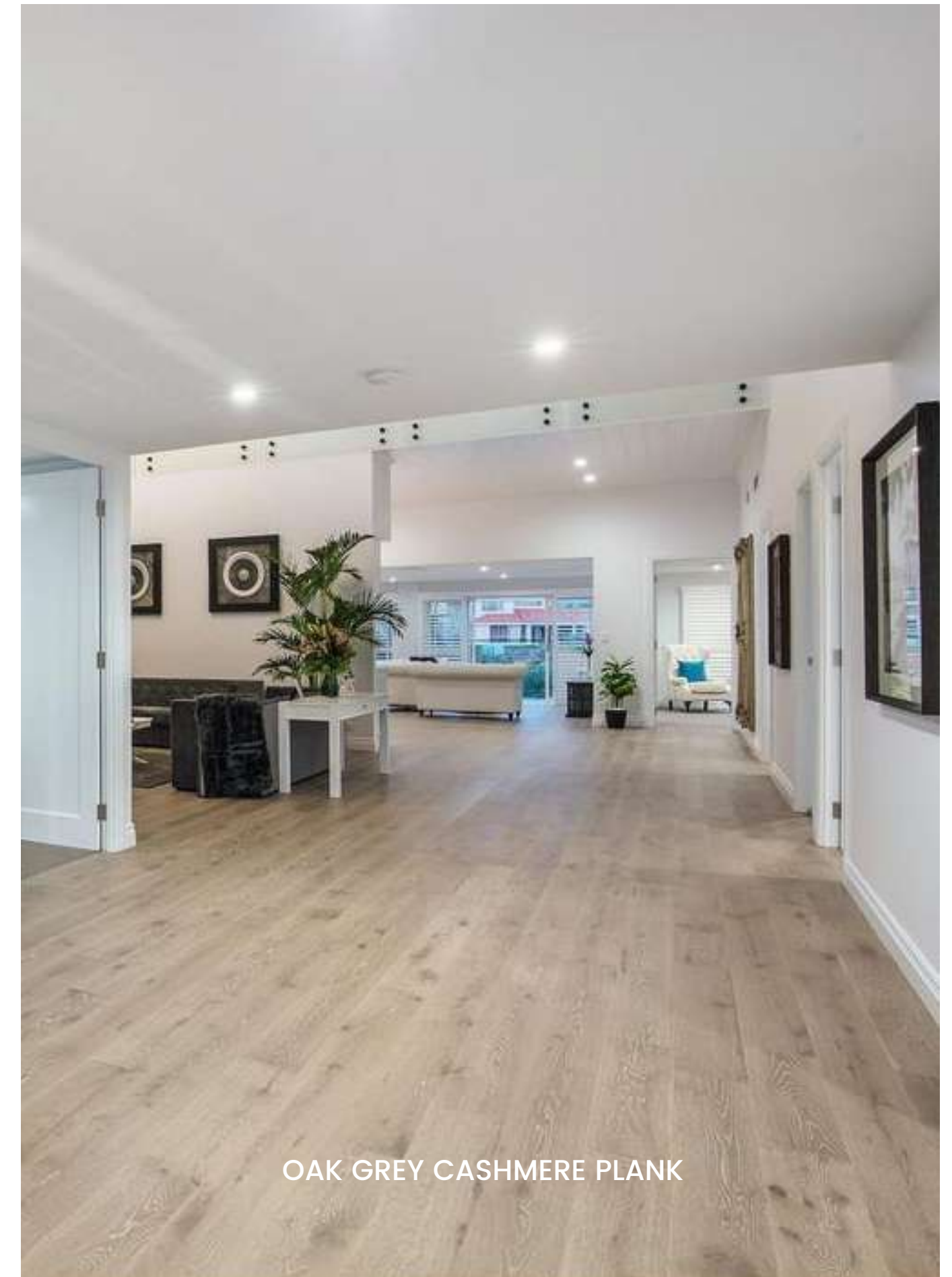
S-1172-7251

15/3.2mm x 190mm x 600mm... 2100mm  
PLANK





OAK GREY CASHMERE PLANK



OAK GREY CASHMERE PLANK





OAK GREY CASHMERE PLANK



OAK GREY CASHMERE PLANK



OAK GREY CASHMERE PLANK





**OAK ROCKY REEF**

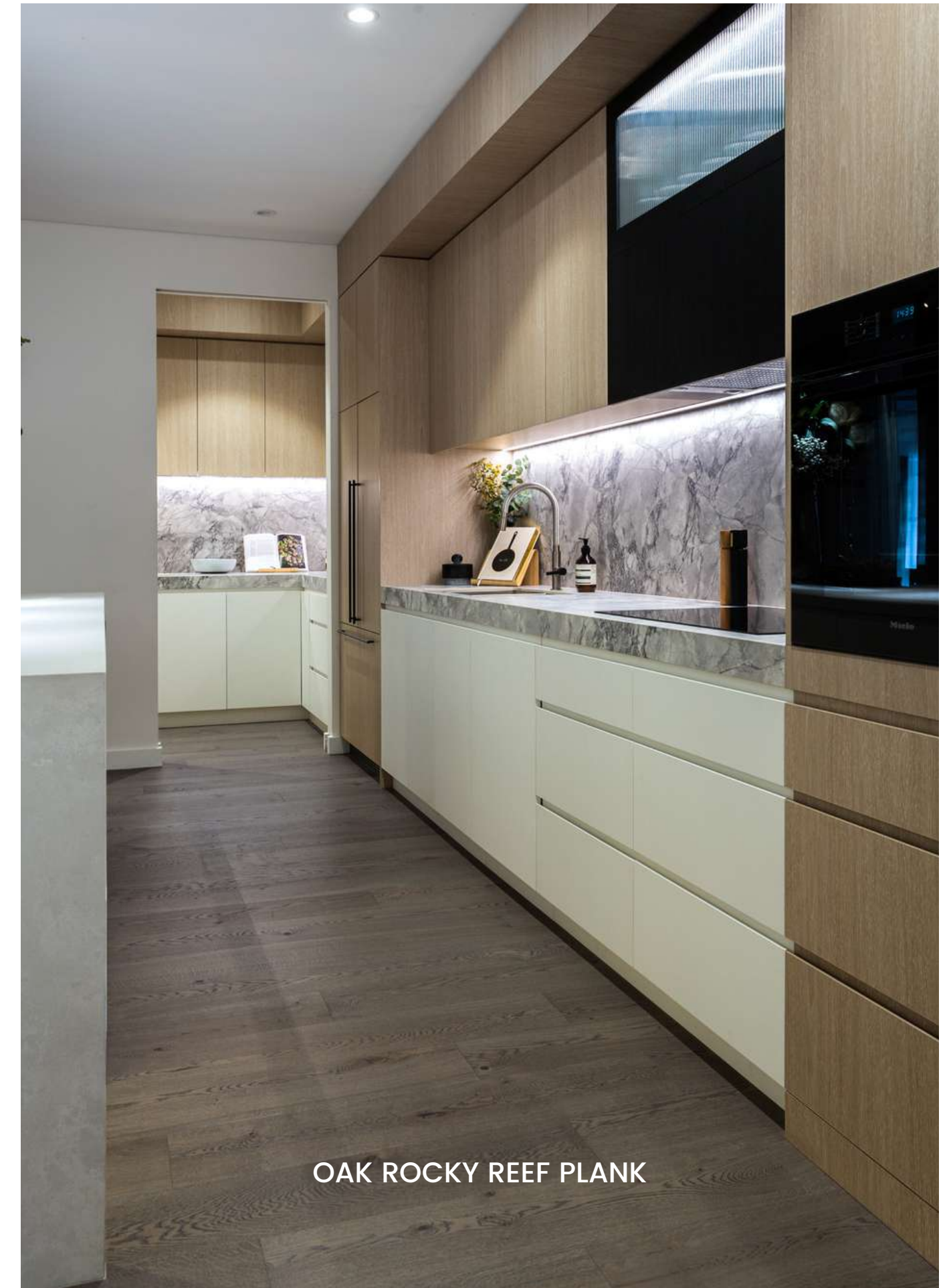
S-1172-7230

15/3.2mm x 190mm x 600..2100mm  
PLANK





OAK ROCKY REEF PLANK

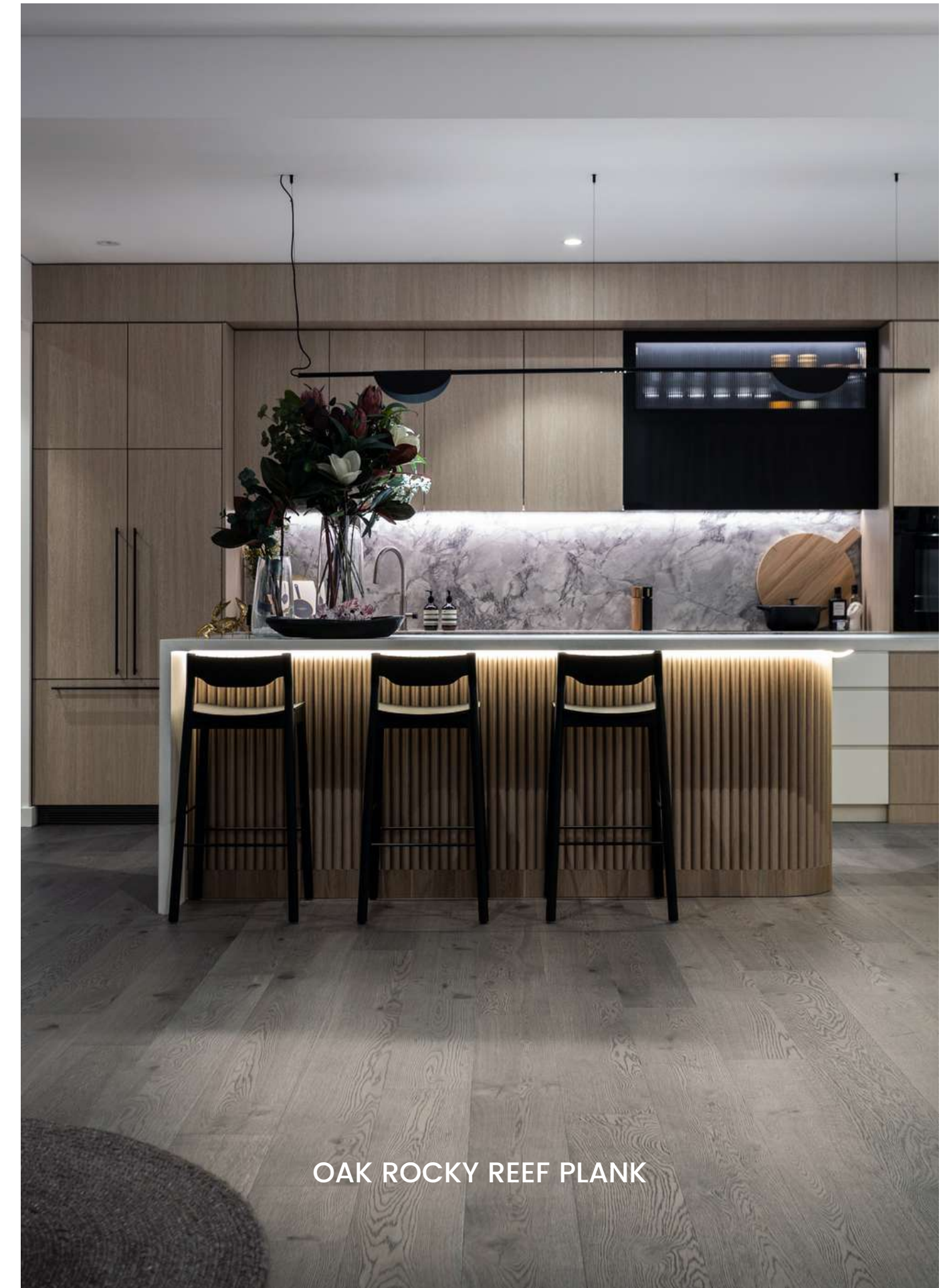


OAK ROCKY REEF PLANK





OAK ROCKY REEF PLANK



OAK ROCKY REEF PLANK

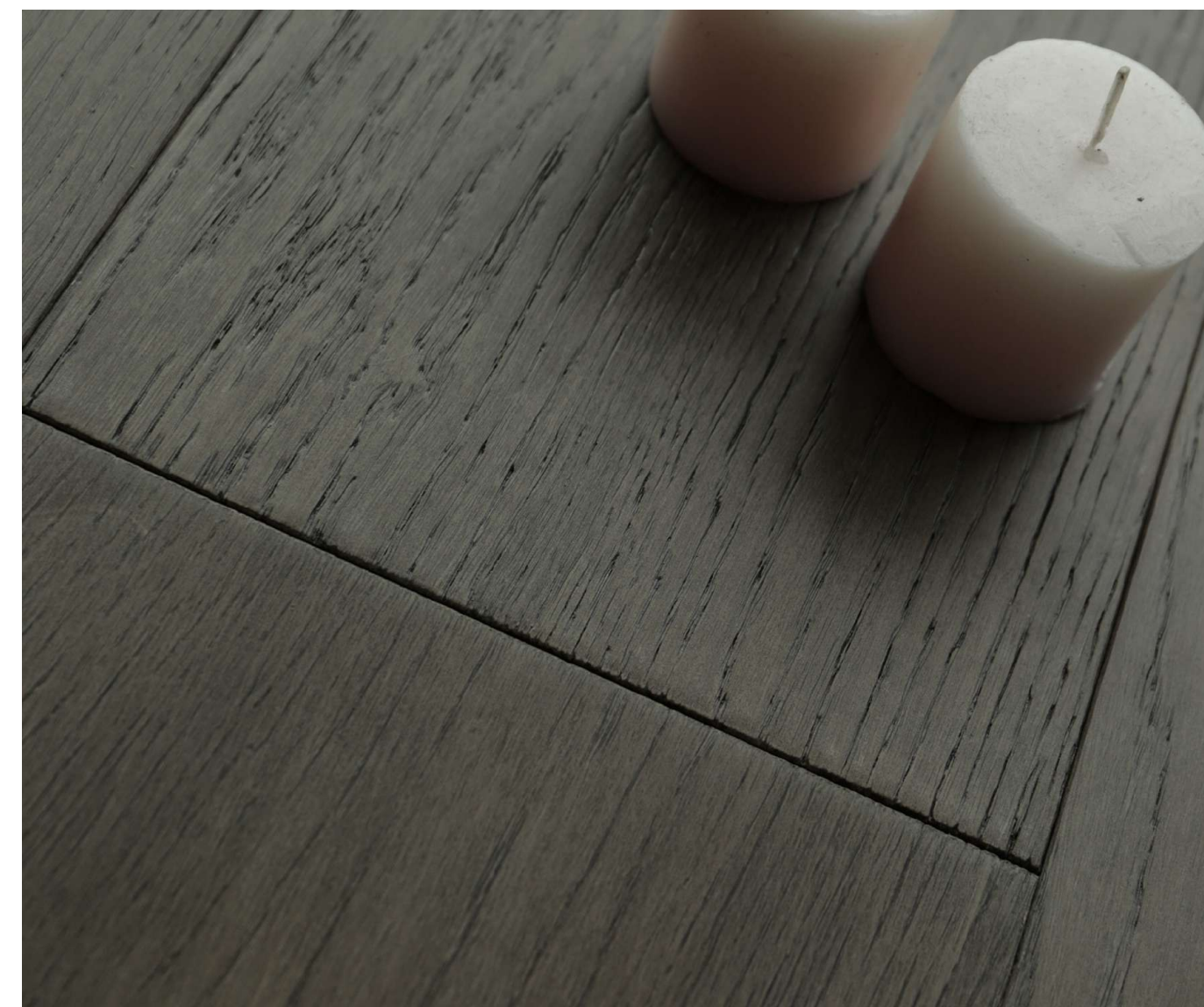




## OAK WINDSOR BROWN GREY

14/3mm x 600mm x 600mm  
SQUARE TILE





## OAK GREY 359

14/2mm x 190mm x 500mm...1900mm  
PLANK



# MEDIUM NATURAL TONES

Medium natural tones of wooden flooring bring a warm and inviting touch to any interior space. The natural tones and grains of the wood create a sense of comfort and calmness while also adding texture and depth to the room. This type of flooring is versatile and can complement a variety of design styles, from modern to traditional. These tones make an excellent choice for creating warm and comfortable spaces.



MEDIUM NATURAL TONES  
COLLECTION



RUSTICO TREND OAK  
ICELAND SCRAPPED

L-1075, L-1402  
13/3.2...3.5MM X 176MM X 2205MM  
PLANK  
TILO COLLECTION



RUSTICO TREND OAK  
CARAMEL VALLEY

L-1301, L-1826  
13/3.2...3.5MM X 176MM X 2205MM  
PLANK  
TILO COLLECTION



TEAK

14/3MM X 120MM X 600MM  
CHEVRON  
CHAMPACA COLLECTION



OAK RAUCHTOPAZ

1153-4505  
15/3.2MM X 127MM X 600MM...2100MM  
PLANK  
COSWICK COLLECTION



OAK WHEAT BRUSHED

12/2MM X 125MM X 300...1200MM  
PLANK  
LAMETT COLLECTION



MARCANTO OAK CARAMEL  
ALPIN

L-1119, L-1279  
13/3.2...3.5MM X 176MM X 2205MM  
PLANK  
TILO COLLECTION



RUSTICO TREND OAK  
CARAMEL SCRAPPED

L-1830  
13/3.2...3.5MM X 176MM X 2205MM  
PLANK  
TILO COLLECTION



OAK BERGEN

1172-7546  
15/3.2MM X 190MM X 600..2100MM  
PLANK  
COSWICK COLLECTION



MEDIUM NATURAL TONES  
COLLECTION



OAK NATURAL  
14/3 MM X 120MM X 600MM  
CHEVRON  
CHAMPACA COLLECTION



OAK RAUCHTÖPAZ  
14/3MM X 120MM X 600MM  
CHEVRON  
CHAMPACA COLLECTION



OAK WHEAT  
14/3MM X 120MM X 600MM  
CHEVRON  
CHAMPACA COLLECTION



OAK SAHARA  
1123-4200  
19.05/3.2MM X 127MM X 528MM  
CHEVRON  
CHAMPACA COLLECTION



OAK CHESTNUT  
14/2MM X 190MM X 500MM...1900MM  
PLANK  
LAMETT XL COLLECTION





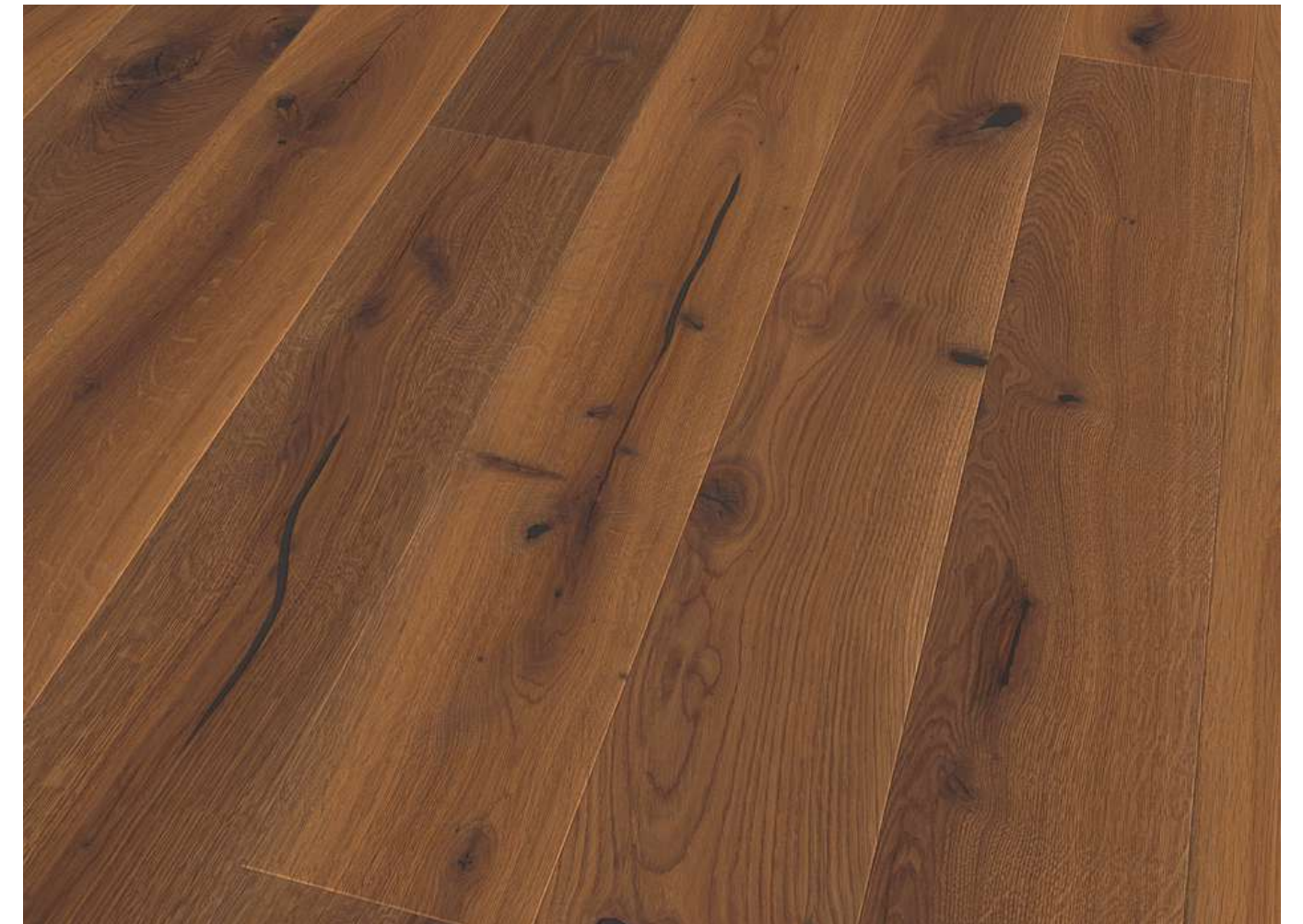
## RUSTICO TREND OAK ICELAND SCRAPPED

L-1075

L-1402

13/3.2...3.5mm x 176mm x 2205mm  
PLANK



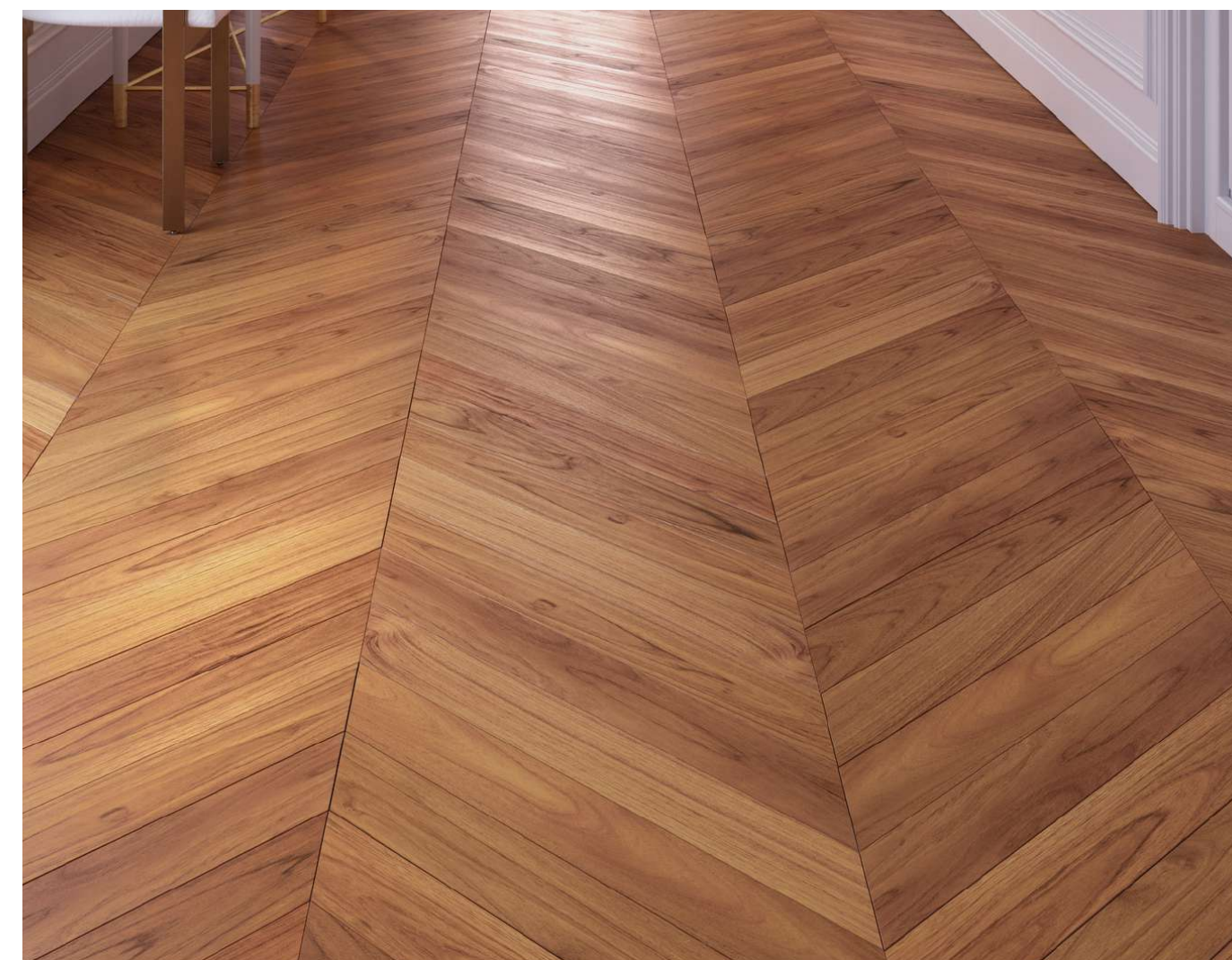


## RUSTICO TREND OAK CARAMEL VALLEY

L-1301, L-1826

13/3.2...3.5mm x 176mm x 2205mm  
PLANK





**TEAK**  
14/3mm x 120mm x 600mm  
Chevron



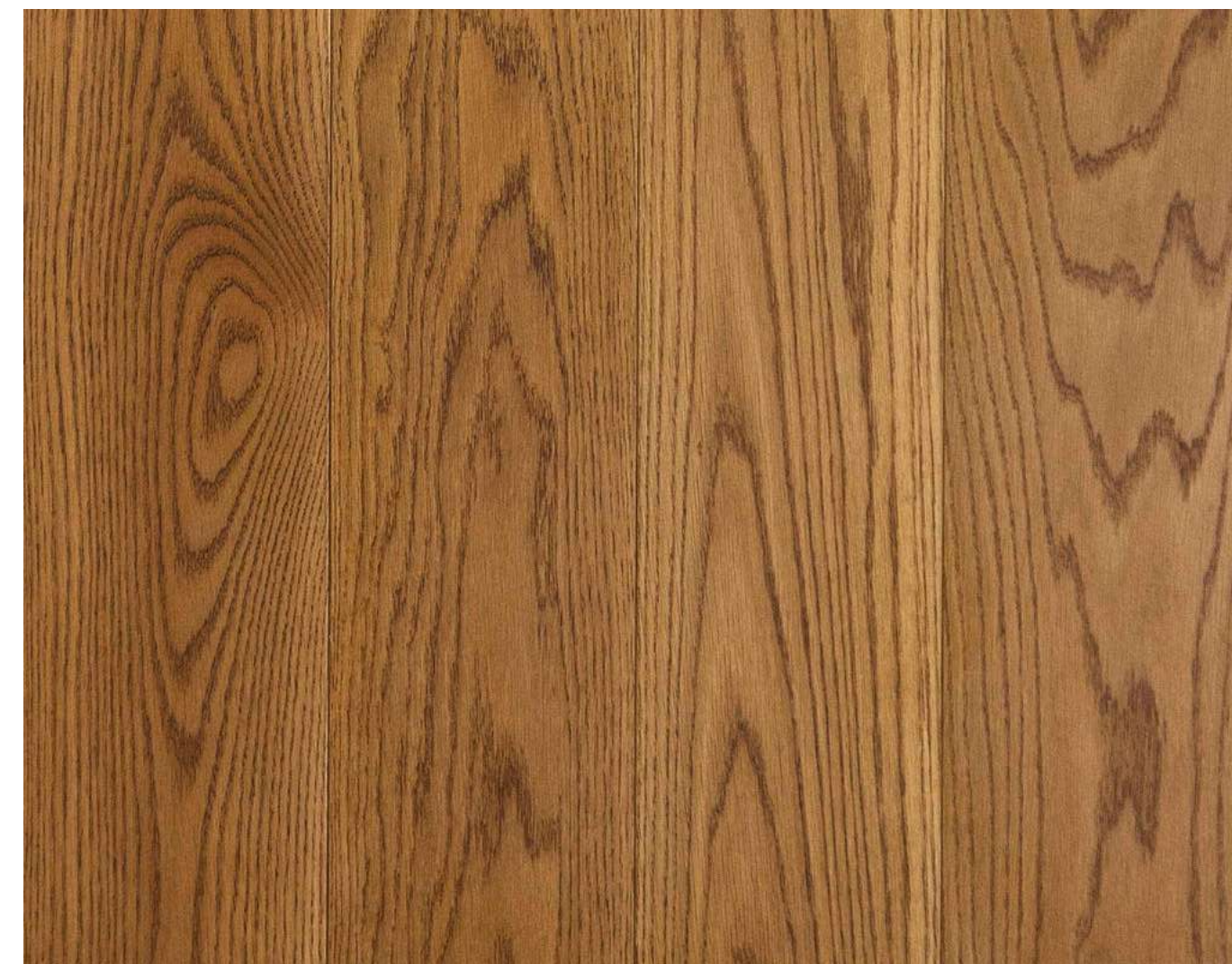


## OAK RAUCHTOPAZ

1153-4505

15/4mm x 127mm x 600...2100mm  
PLANK





## OAK WHEAT BRUSHED

12/2mm x 125mm x 300...1200mm

PLANK



ASHBURY OAK WHEAT BRUSHED





## MARCANTO OAK CARAMEL ALPIN

L-1119

13/3.2...3.5mm x 176mm x 2205mm  
PLANK

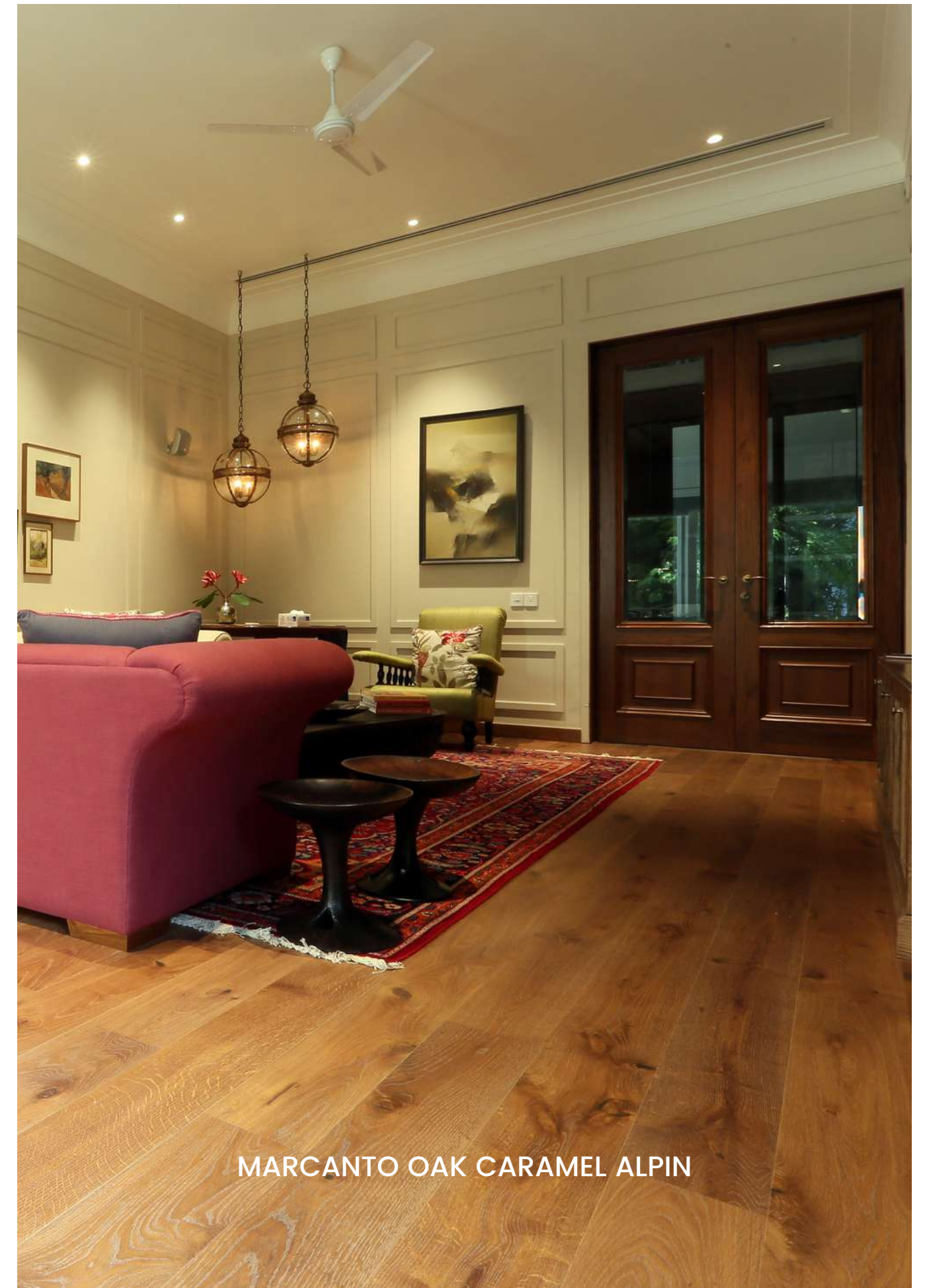


MARCANTO OAK CARAMEL ALPIN



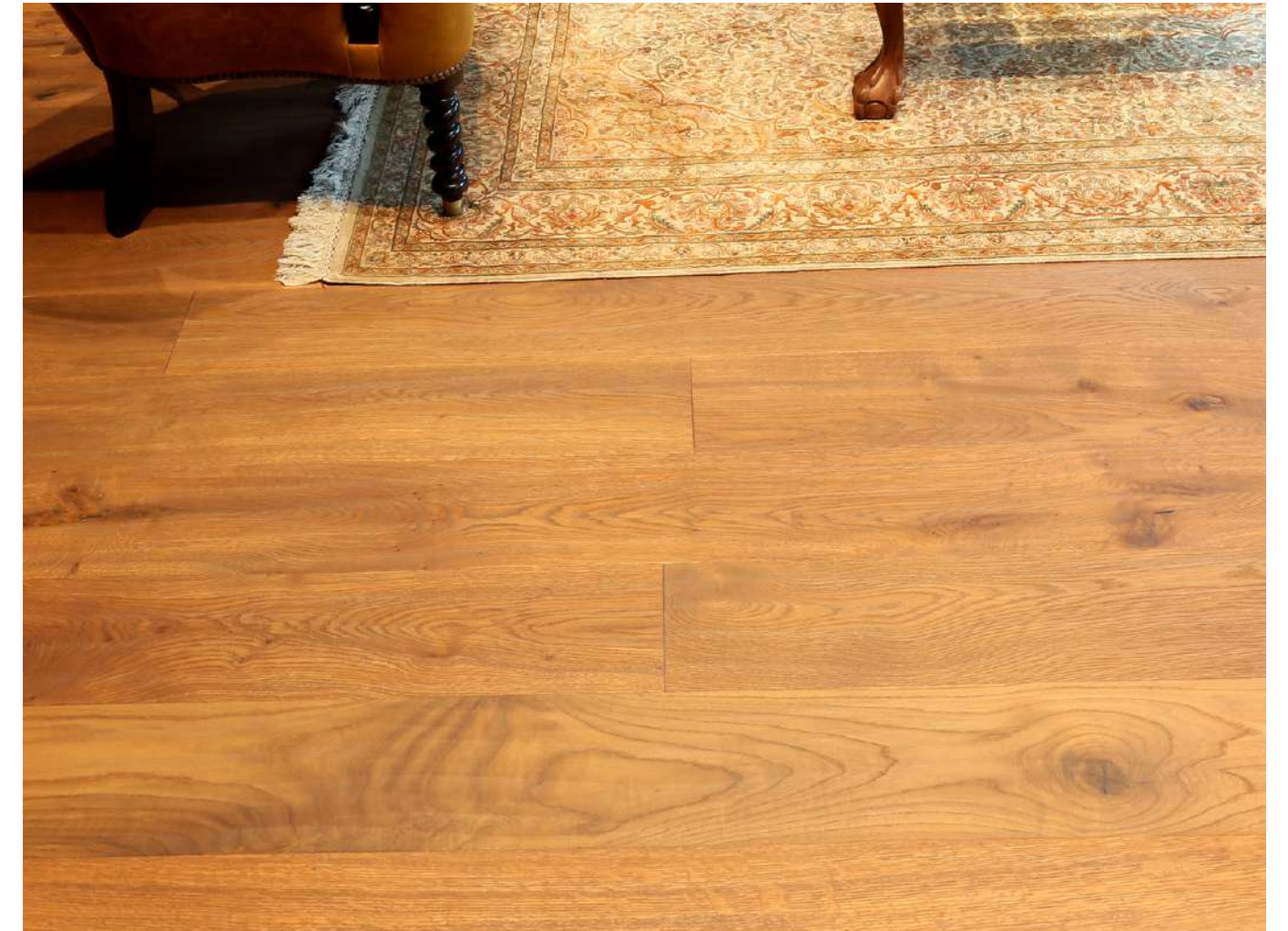


MARCANTO OAK CARAMEL ALPIN



MARCANTO OAK CARAMEL ALPIN



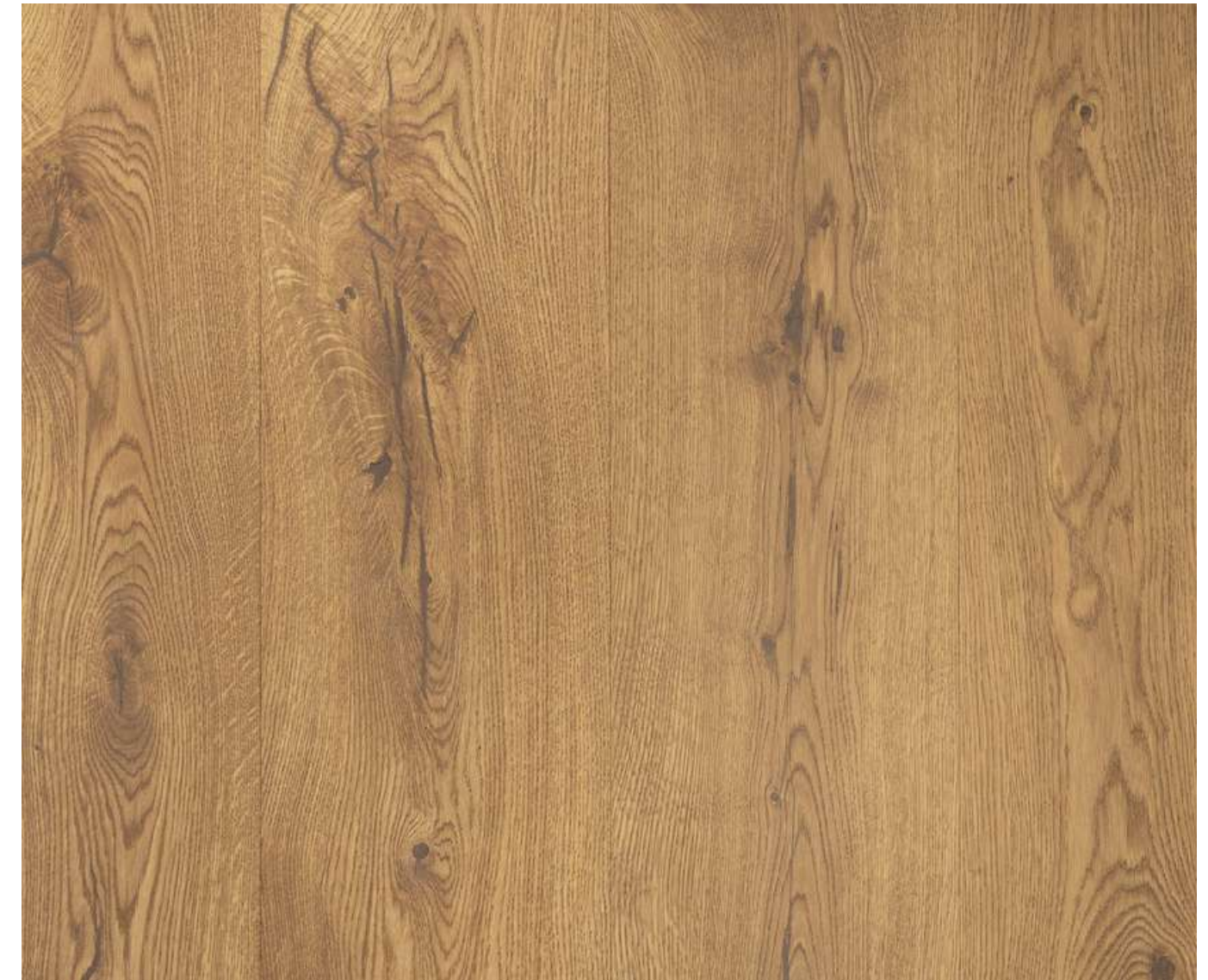


## RUSTICO TREND OAK CARAMEL SCRAPPED

L-1830

13/3.2...3.5mm x 176mm x 2205mm  
PLANK



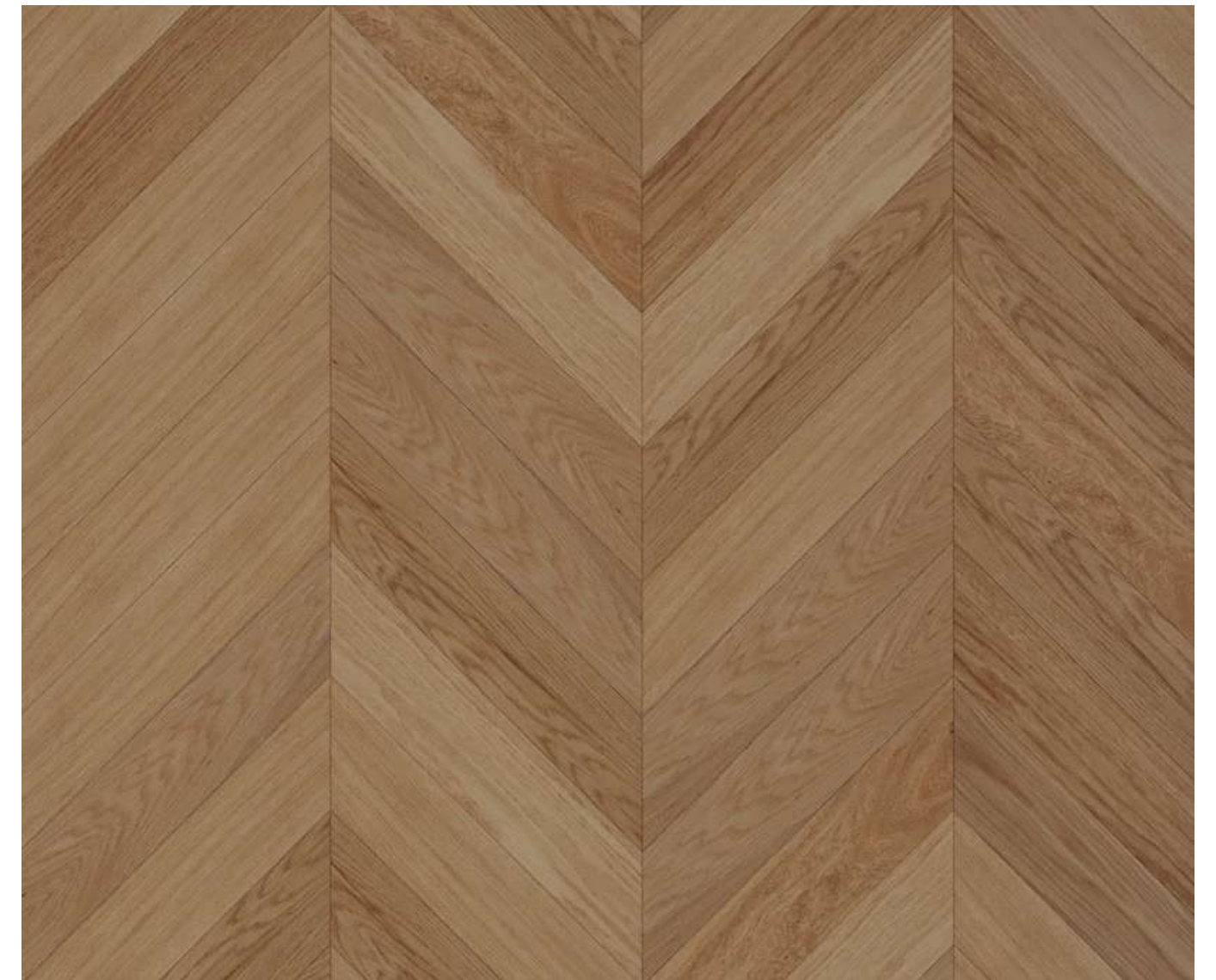


## OAK BERGEN

1172-7546

15/3.2mm x 190mm x 600..2100mm  
PLANK





**OAK NATURAL**  
14/3 mm x 120mm x 600mm  
CHEVRON





## OAK RAUCHTOPAZ

14/3mm x 120mm x 600mm

CHEVRON





## OAK WHEAT

14/3mm x 120mm x 600mm  
CHEVRON





## OAK SAHARA

1123-4200

19.05/3.2mm x 127mm x 528mm  
CHEVRON





OAK CHESTNUT  
14/2mm x 190mm x 500mm...1900mm  
PLANK



# EARTHY BROWN TONES

Using earthy brown tones of wooden flooring can create a regal and elegant atmosphere in any interior. The natural beauty of wood adds character and texture to a space, making it feel cosy and grounded. Earthy brown tones can also complement a wide range of colour schemes and design styles, from rustic to modern. These darker tones make an excellent choice for creating an elegant and sophisticated space.



EARTHY BROWN TONES  
COLLECTION



ASH MOCCA ELEGANCE  
LACQUER 3 STRIP  
14/3.5MM X 182MM X 2200MM  
PLANK  
BALTIC COLLECTION



ASHBURY OAK CARAMEL  
BRUSHED  
12/2MM X 125MM X 300...1200MM  
PLANK  
LAMETT COLLECTION



OAK MILK CHOCOLATE  
1174-4217  
15/3.2MM X 127MM X 635MM  
HERRINGBONE  
COSWICK COLLECTION



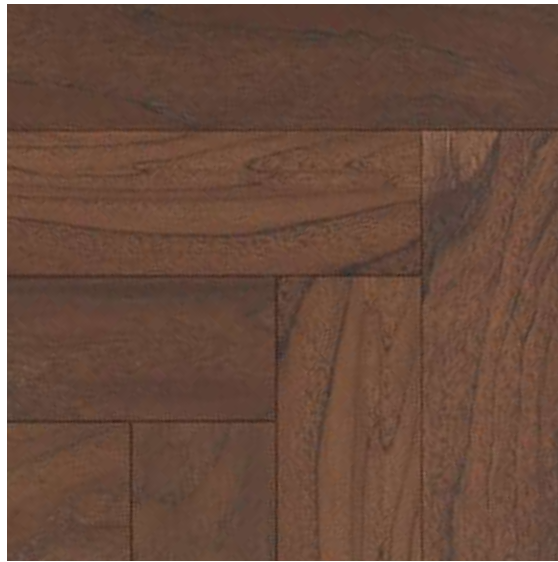
AMERICAN WALNUT  
14/3 MM X 120MM X 600MM  
PLANK  
CHAMPACA COLLECTION



OAK MILK CHOCOLATE  
S-1172-7217  
15/3.2MM X 190MM X 600..2100MM  
PLANK  
COSWICK COLLECTION



AMERICAN WALNUT  
14/3 MM X 120MM X 600MM  
CHEVRON  
CHAMPACA COLLECTION



TEAK COCAO  
1168-4217  
15/4MM X 107.95MM X 647.7MM  
HERRINGBONE  
CHAMPACA COLLECTION



OAK ZAFARI  
14/3MM X 120MM X 600MM  
CHEVRON  
CHAMPACA COLLECTION



EARTHY BROWN TONES  
COLLECTION



OAK ZAFARI  
14/3MM X 190MM X 600MM...1800MM  
PLANK  
CHAMPACA COLLECTION



OAK BUCKINGHAM ZAFARI  
14/3MM X 600MM X 600MM  
SQUARE TILE  
CHAMPACA COLLECTION



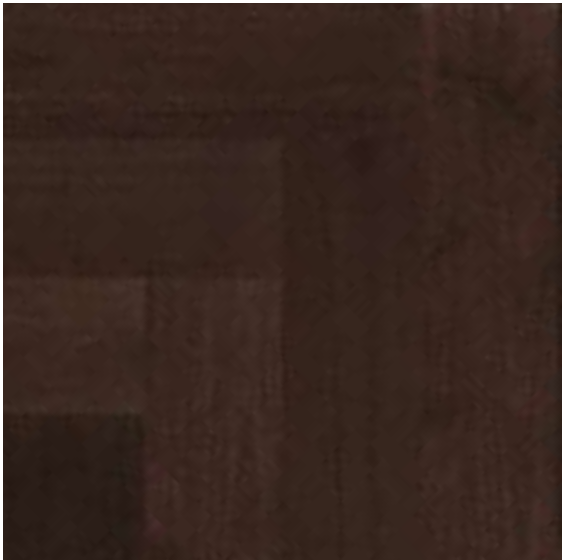
AMERICAN WALNUT  
BRISTOL NATURAL  
14/3MM X 600MM X 600MM  
SQUARE TILE  
CHAMPACA COLLECTION



OAK CARAMEL  
14/2MM X 190MM X 500MM...1900MM  
PLANK  
LAMETT XL COLLECTION

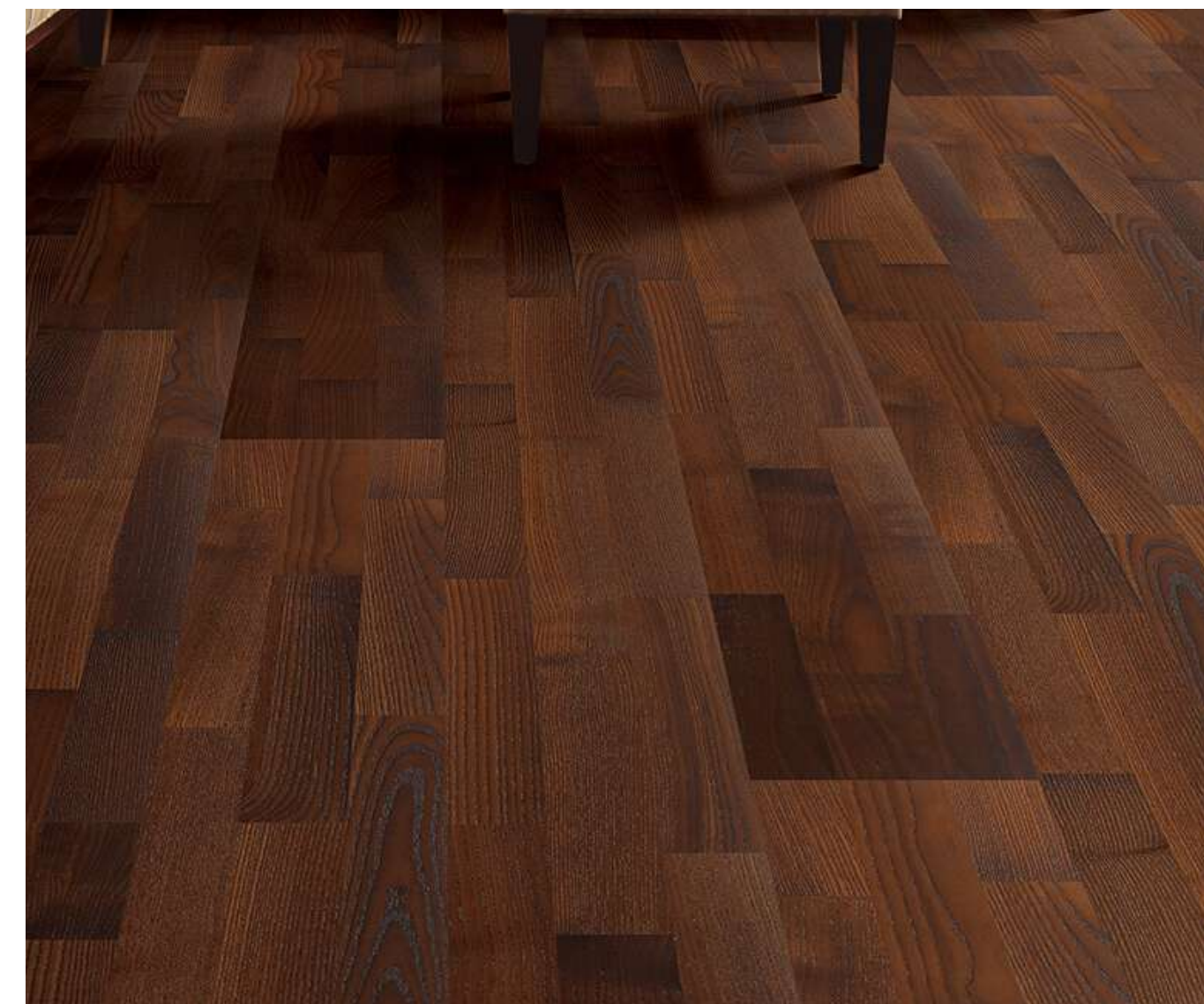


OAK COFFEE  
14/2MM X 190MM X 500MM...1900MM  
PLANK  
LAMETT XL COLLECTION



THAI TEAK WALNUT  
14/3MM X 120MM X 600MM  
HERRINGBONE  
CHAMPACA COLLECTION





ASH MOCCA ELEGANCE  
LACQUER 3 STRIP  
14/3.5mm x 182mm x 2200mm  
PLANK





ASHBURY OAK CARAMEL  
BRUSHED  
12/2mm x 125mm x 300...1200mm  
PLANK



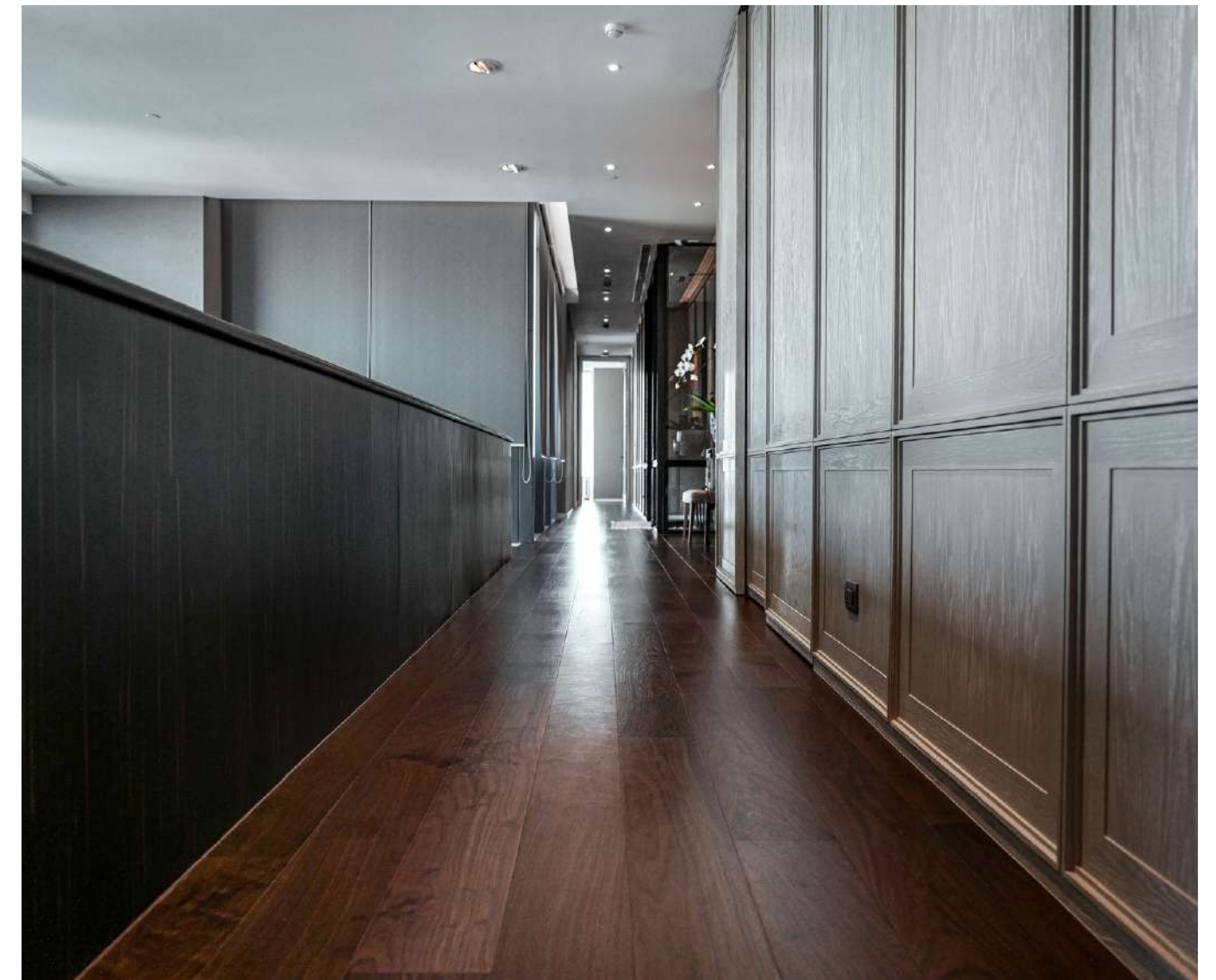


## OAK MILK CHOCOLATE

1174-4217

15/3.2mm x 127mm x 635mm  
Herringbone





## AMERICAN WALNUT

14/3 mm x 190mm x 1800mm  
PLANK





## OAK MILK CHOCOLATE

S-1172-7217

15/3.2mm x 190mm x 600..2100mm  
PLANK



OAK MILK CHOCOLATE PLANK





## AMERICAN WALNUT

14/3 mm x 120mm x 600mm  
CHEVRON





**TEAK COCAO**  
14/3mm x 120mm x 600mm  
Herringbone





**OAK ZAFARI**

14/3mm x 120mm x 600mm  
CHEVRON





## OAK ZAFARI

14/3mm x 190mm x 600mm...1800mm  
PLANK





## OAK BUCKINGHAM ZAFARI

14/3mm x 600mm x 600mm

SQUARE TILE





AMERICAN WALNUT  
BRISTOL NATURAL

14/3mm x 600mm x 600mm  
SQUARE TILE





Lamett®

PASSION FOR FLOORS!



## OAK CARMEL

14/2mm x 190mm x 500mm...1900mm  
PLANK

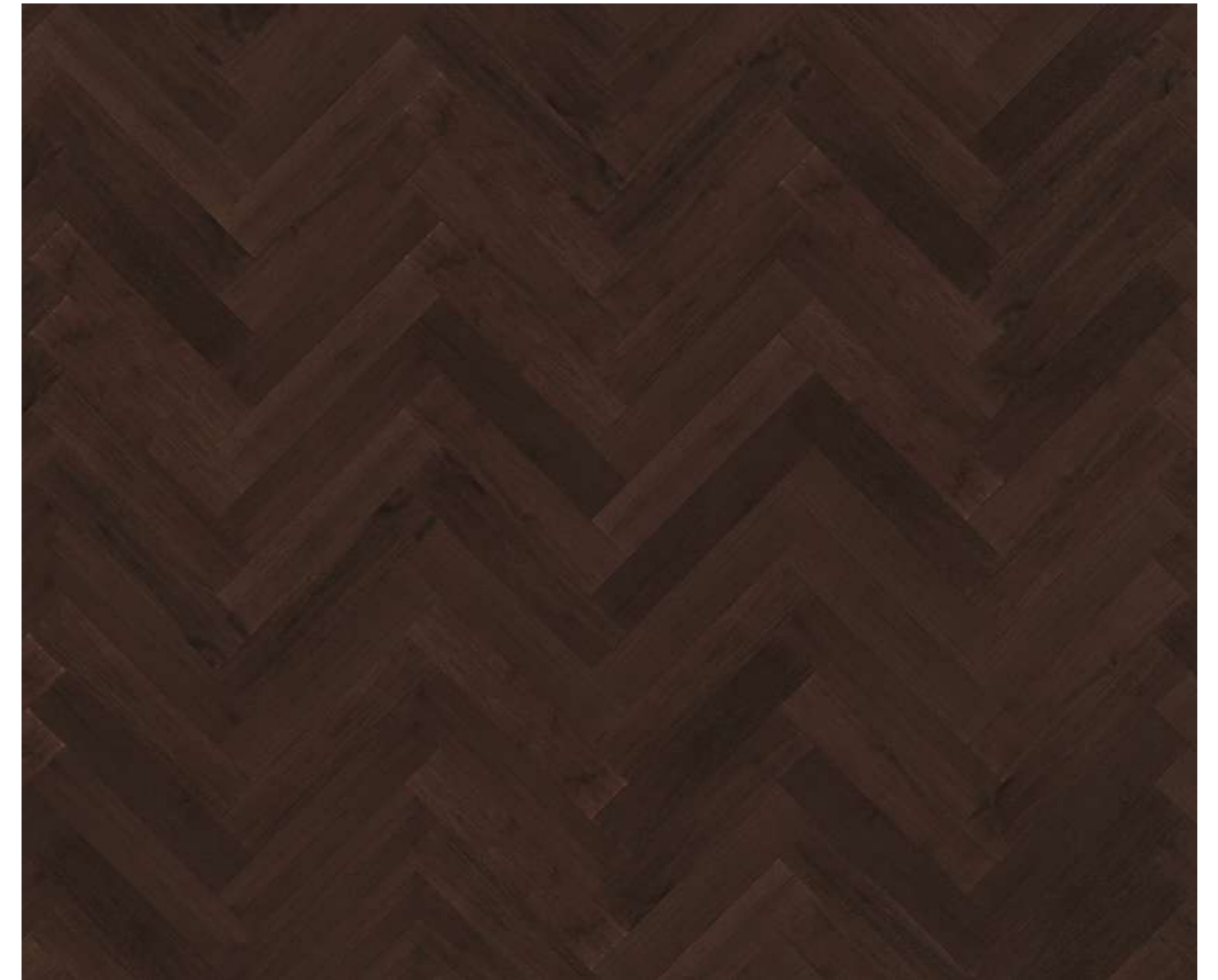




## OAK COFFEE

14/2mm x 190mm x 500mm...1900mm  
PLANK





## THAI TEAK WALNUT

14/3 mm x 90mm x 540mm

HERRINGBONE



# THE SPAN FLOORS STORY

Satinder Chawla director of Span Floors opens heart to reveal the story behind success.

Q. What is Span Floors story (from beginning to today)?  
How did Span Floors came into existence?

From the beginning, I had a passion for beautiful spaces. When I first came across wood floors in the year 2000. I just fell in love with them and wanted one for my room right away. One thing led to another and being in the industry soon we were selling them! That was the start of our wood flooring business.

Q. What Span Floors as a brand stands for?

Chic Design and World class Quality. These 2 characteristics describe our entire business offering.



Q. Take us through your product and offerings and who are the audience for the same?

Our engineered collection is ideal for design and quality conscious people who want the realism and effect of a real wood floor yet do not want to spend as much. The authenticity has to be seen to be believed.

Besides aesthetics, the technical specs are top notch too! All our products are being manufactured in international world-class manufacturing plants at the highest quality levels. Not only that these manufacturers are certified FSC or PEFC or an equivalent stringent certification and meet strict indoor air-quality norms such as E1, Green guard etc.

Q. What about your new website? We hear it is designed for amazing online customer experience?

Yes, the website is designed to be simple, intuitive and interactive. We specifically took care to present only the most relevant data so as to cut unnecessary clutter. Information is laid out in a simple, easy to navigate manner so that the sought information is gathered and understood quickly.

Q. What tips can you give to those who are interested in buying laminate floors? What few key points one should keep in mind?

People generally go by aesthetics as the first parameter. So if they like something they check the price and so on... No doubt, how the product looks is extremely important as ultimately that is going to affect the visual outcome of the room.

However, the other equally important concern should be the expected in-service lifespan of the product, it's ability to take the day to day usage and the impact the product has on the well being of the room occupants.

Last but not the least, the best of the product can go waste without proper technical advice and installation. Do look for the quality of advice from the vendor. This will be a guide as to how much he understands his own product and his ability to help you in case of any service need in future.

Q. Can you please share your vision for next 3-5 years?

Our vision is clear. We will continue to work relentlessly to retain our leadership in the designer wood flooring segment.

We fully understand that this leadership has been only been possible due to the trust our esteemed End Users, Architects, Designers and Chanel Partners continue to place on us and the ongoing hard work of the entire Span Floors team and our international partners.



Visit us at our Flagship Store.  
Experience the world of wood floors as never before!



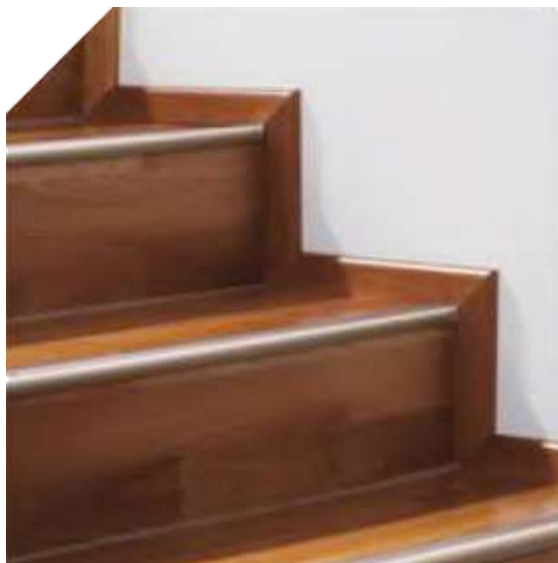
## GOD IS IN THE DETAIL

No matter how good an individual matter is, it comes to life only when put together alongside others to create a whole. Our accessories do just that...



# ACCESSORIES

A full range of Wood and aluminium profiles to compliment every site situation. Customized profiles for unique situations.



STAIR NOSING



CUSTOM SKIRTING



SOLID WOOD SKIRTING



END PROFILE



REDUCER PROFILE



T PROFILE



BEEDING



BEEDING



# KNOW YOUR SPAN FLOOR!

The Span Floors Engineered flooring collection comes with top of the line technical specs for successful day to day and long term usage. At the same time, it will be good to know some key things that will help you make a sound decision as well as get the best out of your investment should you choose to go ahead. Read on below for further information:



## SCRATCH RESISTANT

Our engineered floors are finished using high quality lacquers or hardwax oils depending on the collection. Generally, lacquered coatings are more scratch resistant than hardwax oils. At the same time, scratches on hardwax oils are easier to repair. Speak to your Span floors specialist for a recommendation based on your particular needs and lifestyle.



## WATER RESISTANT

The high quality structure in all our floors are strong enough to handle the routine moisture fluctuations found in air as well as an occasional accidental drink spill. Just wipe off the spill immediately. At the same time, flooding of the flooring or continued seepage of moisture from any source, may cause damage to a part or the whole of the floor. In such an event, a few or all of the floorings planks may need to be replaced or sanded and recoated depending on the situation.



## EASY INSTALLATION

Our floors come pre edged with a T & G profile or a click profile for easy installation. You could even take your floor along when you move and refit depending on the type of installation.



## EASY CLEANING

Use a broom or a vacuum cleaner followed by a well wrung mop, if needed, to take care of the routine cleaning. No special equipment needed. The use of our recommended cleaning solutions added to fresh water used for mopping will keep your floors in good shape. Our technical and sales team are well trained to guide you on the appropriate steps.



## HYGENIC

The surface of our engineered floors are coated with suitable finishes. That makes them hypoallergenic (hypo = low) for most people. Day to day cleaning using appropriate cleaners which are easily available in stock with us is generally enough to maintain a high level of cleanliness.



## RELATIVE HUMIDITY

Relative humidity or RH is the amount of moisture present in the room air at any given time. This keeps fluctuating during the day and seasonally. Any wood based material reacts to these changes. You may have noticed your wooden doors and windows jam a bit during monsoons. This is humidity at work. Similarly, such changes may cause your engineered wood flooring to expand or contract leading to some creaking noises or gaps between plank joints typically associated with wood floors. While proper installation is helpful in avoiding these to a large extent, sometimes the humidity fluctuations are too large. Keeping the in room humidity by using air conditioning helps particularly during monsoons. Similarly when the air is too dry, some humidification helps. Speak to our teams for some easy tips on how to do this.



## IMPACT RESISTANCE

Engineered floors are real wood floors. Hence they can be dented somewhat depending on the intensity of the impact. These floors are not fragile though and can mostly take the knocks from day to day life. However high heels particularly not in good repair may cause dents over a period of time. Depending on the thickness of the top layer of your engineered wood floor, it may be possible to renew the entire flooring to a new like condition after many years of usage.



## SOUND REDUCTION

World class underlays tremendously affect both in room as well as below room acoustics. Using an appropriate underlay such as Elastilon (a layer of thin matt laid under the flooring) can improve the quality of sound tremendously while walking on it with hard heels.





## LONG TERM MAINTENANCE

Being real wood, our engineered floors, may at one time after some years of usage, require a renewer coating or a full sand and recoat to make them look fresh again. Using the specially formulated solutions with appropriate machines can freshen up the wood surface for a more brighter and revitalised finish. Just get in touch with us and our trained specialists will guide you through.

## MORE ON FLOOR CLEANING AND MAINTENANCE

Our special cleaners and cleaning kits enable you to clean and maintain your floors in a sweep. Ergonomic and simple to use, the floor cleaning kit is quick to assemble and refill with the specially developed engineered flooring cleaner. Just use the correct kind based on the finish on your Span engineered floor. Forget filling up a bucket and adding concentrate, just spray and clean!

Additionally you may opt to buy just the Cleaning Concentrate and add the recommended quantity as mentioned on the bottles to the water bucket and use it for day to day mopping with a very well wrung mop.

### APPLICATION : Daily care (hardwood flooring)







# SPAN SILENCE + UNDERLAY – INSTALLATION CUM SOUND INSULATION SYSTEM

One of the most important parameters of comfort is sound. Building materials that provide quality sound insulation are much in demand today. With noise surrounding us in the external environment, it is becoming increasingly important that we use materials that offer a quieter and more comfortable indoor environment to help us concentrate & relax better. The Span Silence + sound reduction cum installation underlay for wood floors provides unmatched sound and walking comfort while at the same time providing an exceptionally firm hold on to the wood flooring planks.

Unlike normal underlays which simply lie below the surface unattached to the flooring, the Span Silence + system forms a permanent bond with the flooring planks yet remains unattached to the subfloor below allowing for a floating installation. For the end user, the result is a combination of fantastic sound insulation as well as an installation system that feels as if one is walking on a fully bonded surface-A very solid feel indeed. We invite you to take a test walk at our stores to perceive the difference!

## THE SPAN SILENCE + ADVANTAGE

- Unmatched sound insulation – both in room & the room below
- A scientific installation system that works with wood rather than against it.
- Improved moisture resistance
- Quick & easy to install
- Improved indoor air quality as compared to traditional systems (nail down/glue down)
- More comfortable installation – knee friendly





# WE ARE HERE TO HELP



## OUR GUARANTEES

Our floors have been developed for a long product life. And because only tested quality leaves the factory, all our products carry a warranty directly by the international manufacturers. You are requested to go through the warranty terms and make yourself aware of the conditions so as to get the best out of your purchase. Detailed warranty can be requested by contacting us at [floors@spanfloors.com](mailto:floors@spanfloors.com).

## DISCLAIMER

Colours as appearing in the catalogue may differ from actual products. Refer to actual samples for a more accurate impression. Also note wood being a natural product will have variation even within the same colour tone.

## DELIVERY

Your satisfaction is our goal. Therefore, all products are normally available ex stock, and thus as soon as possible at your site.

## VISIT US ON WWW.SPANFLOORS.COM TOO

Besides the information available in this brochure, you will find additional information about us and our products at [www.spanfloors.com](http://www.spanfloors.com). From the product portfolio through to new product features and technical information, our internet platform provides everything you are looking for.

## YOUR LOCAL CONTACT

We have an expanded pan India sales channel. For information on our local retail partner please visit [www.spanfloors.com](http://www.spanfloors.com) or else write us directly at [floors@spanfloors.com](mailto:floors@spanfloors.com).

At Span floors, we understand our responsibility towards environment – both internal as well as external. The manufacturers we represent conform to very high standards with regards to sourcing of wood & the finished products impact on indoor air quality. A big range of products accordingly are certified by either FSC or PEFC for wood sourcing while for emissions certifications such as E1 or M1 are applicable. These certifications are obtained by the manufacturer directly at their end.







#### FLAGSHIP STORE

M8, 1st Floor, M Block Market, Greater Kailash II,  
New Delhi-110048, India

+91 9971509922, +91 9212096387

[floors@spanfloors.com](mailto:floors@spanfloors.com)



[www.spanfloors.com](http://www.spanfloors.com)

LLP IN ACB - 3245

AHMEDABAD | BANGALORE | CHANDIGARH | HYDERABAD | JAIPUR | JALANDHAR | LUDHIANA  
MOHALI | MUMBAI | PUNE | RAJPURA | SECUNDERABAD | SRINAGAR | SURAT

COLLECTION 2023-2024